



Realply®

COMPANY PROFILE

For Generations To Come

effortlessly
ELEGANT

RE-DESIGN YOUR HOUSE
BETTER THAN EVER!

RICH + RADIANT

*bringing to you all new
veneers, laminates and
plywood*



“

A dream of many ideas coming together, with great passion and an opportunity seized is how **Realply** was born. Our aim while building this brand was to create an entity which insists on quality, integrity, and efficiency with an immense passion towards the work.

We, as an organization have always invested in people, to augment the well-being of those who work with us, and also, to craft the perfect utilization of available resources, which in turn saves a great deal of time in the manufacturing sector.

We at Realply, have been developing our brand at an immense pace and take a great interest in customer satisfaction. We have designed our innovative and diverse product range to be the “**Consumer’s Kind**”.

At **Realply**, we are mounting ourselves to be the state-of-the-art solution to every aspect of the interior industry. We are the brand of the word, with firm intentions to make up to the promises that we make.

From the Chairman’s Desk, Mr. Alok Agarwal



”

1997



Unique Plywoods Pvt Ltd
founded by Mr. S.N. Agarwal



1998

1st Production came out



2007

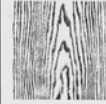
Mr. Alok Agarwal took over as
Chairman & Managing
Director(CMD)

2008



Introduced Laminate

2008



Introduced Veneer

2019

Unique Plywoods evolved into
Realply Industries



2019



Introduced Live Edge tables
& Edge Bands

2020



One of India's 1st
Plywood company to get
CARB CERTIFIED

TIMELINE



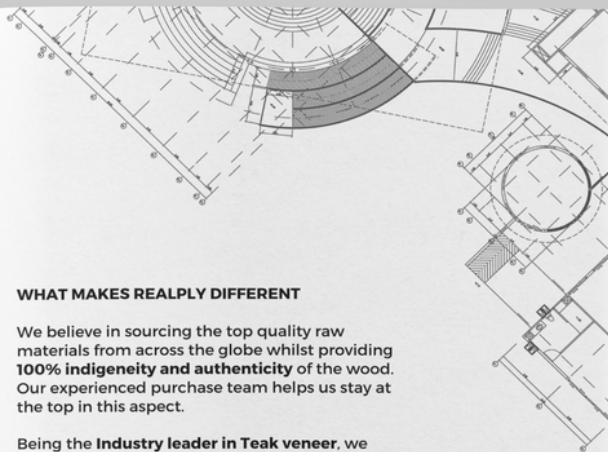
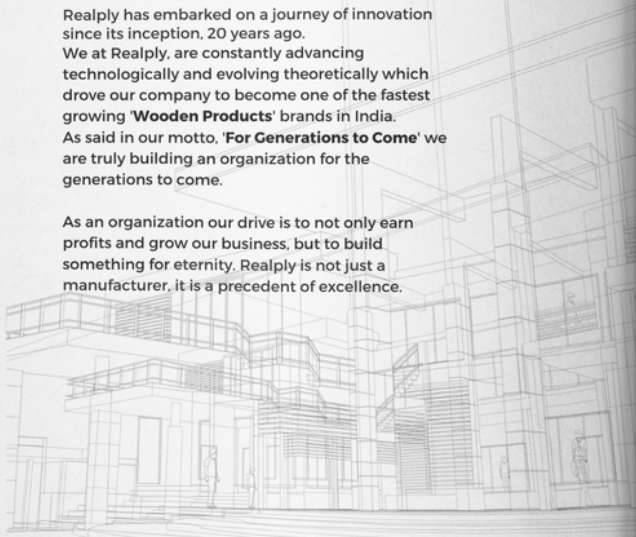
GET TO KNOW US

Realply has embarked on a journey of innovation since its inception, 20 years ago.

We at Realply, are constantly advancing technologically and evolving theoretically which drove our company to become one of the fastest growing 'Wooden Products' brands in India.

As said in our motto, 'For Generations to Come' we are truly building an organization for the generations to come.

As an organization our drive is to not only earn profits and grow our business, but to build something for eternity. Realply is not just a manufacturer, it is a precedent of excellence.



WHAT MAKES REALPLY DIFFERENT

We believe in sourcing the top quality raw materials from across the globe whilst providing **100% indigeneity and authenticity** of the wood. Our experienced purchase team helps us stay at the top in this aspect.

Being the **Industry leader in Teak veneer**, we provide our customer with the largest range of veneer with unbeatable quality while being price competitive for all our products. We prioritize customer satisfaction and delivering the best product possible to the consumer.

Having a vast network of dealers & distributors, we have been consistently creating dazzling modern era designs for the world to see. We also pride ourselves in having one of the **largest veneer libraries** ever seen.

To stay at the forefront, our in house **Research & Development** team is working towards evolving new methods of production and manufacturing in an environmentally conscious & green way, around the clock.





PRODUCT RANGE

RANGE OF VENEERS

NATURAL VENEER, is a unique material sliced from logs that is influenced by an individual tree's reaction to its soil composition, geographic location and other growing conditions. The intrinsic patterns and markings in natural veneers aren't altered or enhanced in any way, making each natural veneer from the tree an individual work of art.

RECONSTITUTED VENEER, is a type of man-made wood veneer. A symbol of perfect engineering blended with creative aesthetics, manufactured with modern technology and natural wood. It is created with consistency using real wood from natural, renewable sources. It mimics your favorite wood veneer species and is free from natural defects.

TEAK VENEER, is typically a golden honey brown to a deep brown colour that darkens with age. Teak is a dense and oily hardwood that is relatively easy to work with and strong. It is heavy, with a uniform coarse texture and medium porous grain, its exquisite natural colours are compatible with all kinds of polish while preserving its natural patterns and timeless aesthetic appeal.



VENEERED MDF, with less production time & enhanced quality, these veneers are available in all shades and designs.

PLYWOOD, is an engineered wood product made from three or more 'plies' or thin sheets of wood. These are glued together to form a thicker, flat sheet.

FLEXI PLY. Give life to your imagination without the fear of ply getting clipped, cracked, peeled or stained.

FLUSH DOOR. A durable product with exceptional quality, finish and unique dimensional stability, made from selected hardwood frame & accurate battens for longer life.

DECORATIVE LAMINATE. Innovative designs enriched with color & an array of finished products has the quality to withstand the high impact of wear & stains with unique eye-catching exotic wood grains & textures.

BLOCK BOARD. A zero gap premium board (IS:1659) with highly resistant properties against borer and termite attacks.

EDGE BANDS. Complete the look of your veneered MDF & Plywood products by covering the edges with the natural beauty of edge bands clipped in fine thin strips.

VENEER BACKING FLEECE. The advantage of flexi ply with the beauty of natural veneer packed in a single product.

LIVE EDGE TABLE TOPS. is a style of tables where natural edge of the wood is incorporated into the design of the piece. There are special challenges involved in working with this type of wood, and several methods for live edge have developed. Some leave the natural holes and cracks in the wood while other artists fill them with resins.





MANUFACTURING & PRODUCTION

Realply Industries, takes quality, control and customer satisfaction at the utmost priority. To ensure that our product quality remains remarkable and unvarying throughout, we follow a strict checkpoint procedure along the production line. To set the seal on, we also have a supervisor at every step to ensure a proper implementation.

Realply also believes in authenticity, thus we source all our indigenous raw materials from credible sources across the globe. To provide our customer with the best, we spare no cost or effort in trying to locate the right raw material for our products.

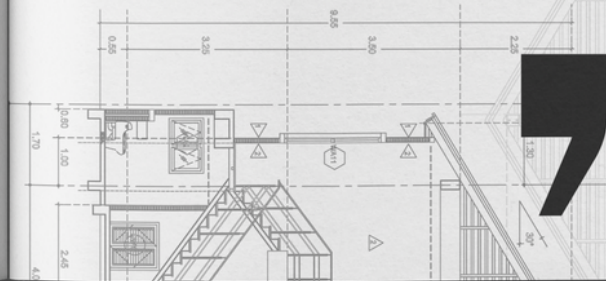
As Realply aims to achieve innovation in all aspects of production, we work in one of its kind manufacturing unit. A fully integrated High-Tech plant which serves from forest to veneer, with all value added processes done in house. Equipped with the latest technology and techniques from Europe, Taiwan and Japan, we are also the first organization in India to get CARB Certification.



Since technology is the future, we at Realply are constantly developing ourselves in all dimensions to be up to date with the latest technology and even a step farther. An enterprise resource planning system is being implemented within the organization, making sure all orders are efficiently taken care of.

OUR SOCIAL RESPONSIBILITY


- We are an environmentally conscious organization.
- Realply believes that any business is built through society's resources and the business shall give back to society.
- We provide employment opportunities to villages nearing our manufacturing unit whilst providing them with building material from time to time.
- We aim to plant over 1,00,000 saplings over the period of next 5 years.
- We aim to reduce our carbon footprint & keep waste to a minimum.
- Realply also re-cycles non biodegradable waste and saves water by re-using it wherever possible.
- Realply also provides meal & boarding services to its workers at highly subsidised rates.







 www.realply.in  info@realply.in

 +91 95995 98473 | 1800 4203167 (toll free)

FOLLOW US ON    